

2009
 Wednesday Night Series Instructions
 Presented by
 Indian Harbor Yacht Club and Old Greenwich Yacht Club

RULES: Races will be governed by the current Racing Rules of Sailing and as modified herein.

SCHEDULE: Every Wednesday evening from May 20th until September 2nd.

** For **OGYC** the race **Wednesday, July 8th** will be the All Hands on Helm race, which will have its own sailing instructions**

ELIGIBILITY: All boats must be registered for the series via the Indian Harbor and Old Greenwich YC website.

SAILS: No spinnakers, gennikers or bloopers. No more than one sail at any time in the fore triangle except during a seamanlike sail change.

COMMUNICATION: The committee will monitor and communicate on VHF channel 72.

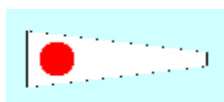
START & FINISH: Between a yellow flag on the RC boat and an adjacent mark appx 1/8 nm SW of Newfoundland reef. The finish line is crossed from the direction of the last mark as per the definition in the Racing Rules. Racers may cross the start - finish line on any leg of the race. When a course is shortened at a turning mark for less than all divisions, an RC boat near the mark will fly the numeral pennant(s) of the Division(s) that are being finished there.

DIVISIONS:

Division I: 111 and lower (PHRF rating)
Division II: 112 to 165
Division III: 166 and higher

STARTING SEQUENCE: Starting signals will be in accordance with RRS 26. The RC may start the divisions in any order or two or more together

| | | | | |
|--|------------------------|------|----------------------|--|
| | | | - pay attention - | A series of short blasts (or drop postponement) |
| | | 6:55 | Division Warning | 1 sound – raise Division Pennants(s) |
| | | 6:56 | Division Preparation | 1 sound – raise P flag (or I flag or black flag) |
| | | 6:59 | | 1 long sound - drop P flag (or I flag or black flag) |
| | | 7:00 | Division start | 1 sound - drop Division Pennant(s) |
| | Second start (if any): | 7:00 | Warning | 1 sound – raise Division Pennant(s) |
| | | 7:01 | Preparation | 1 sound – raise P flag (or I flag or black flag) |
| | | 7:04 | | 1 long sound - drop P flag (or I flag or black flag) |
| | | 7:05 | Division start | 1 sound - drop Division Pennant |
| | Third start (if any): | 7:05 | Warning | 1 sound – raise Division Pennant |
| | | 7:06 | Preparation | 1 sound – raise P flag (or I flag or black flag) |
| | | 7:09 | | 1 long sound - drop P flag (or I flag or black flag) |
| | | 7:10 | Division Start | 1 sound - drop Division Pennant |



I



II



III



P



AP (postponement)

RECALL: One horn sound with a hail and hoisting of code flag “X”.

GENERAL RECALL: Two horn sounds and hoisting of First Substitute.

COURSES: Pre-configured courses will be signaled by a letter beneath the division number board on the Committee Boat. The Race Committee may signal the same course for more than one division, in which case, they shall signal the course by vertically stacking the combined division boards atop the course board. See table below for the course names, the courses and which side marks of the course shall be passed. Marks are in the current “YRA Connecticut Area One-Design Championships Sailing Instructions” including “Marks and Exceptions” shown on the chart.

| Course Name: | Marks of the Course: | Round (leave) all Marks to: | Wind is from the: | Special remarks | Start area | |
|--------------|----------------------|-----------------------------|-------------------|------------------|------------|----------|
| | | | | | east end | west end |
| A | B X | Starboard | Southeast | | 2.3 | 2.3 |
| B | B V X | Port | 135 | | 3.0 | 2.9 |
| C | B X B X | Starboard | | | 4.6 | 4.5 |
| D | A W | Port | | | 2.1 | 2.3 |
| E | AV | Port | South | | 1.8 | 2.3 |
| F | A V W | Port | 180 | | 2.6 | 2.8 |
| G | A W A W | Port | | | 4.2 | 4.4 |
| H | PL | Starboard | | | 1.9 | 1.5 |
| I | UL | Starboard | Southwest | | 2.5 | 1.9 |
| J | UP | Port | | | 2.1 | 1.5 |
| K | UPXU | Port | | | 4.1 | 3.6 |
| L | P L T P L | Starboard | 225 | T = starting pin | 3.8 | 2.9 |
| M | ULTUL | Starboard | | | 4.9 | 3.8 |
| N | L V | Port | | | 2.8 | 2.8 |
| O | L P | Port | West | | 4.1 | 4.7 |
| P | L P V | Port | 270 | | 5.6 | 5.6 |
| Q | X B | Port | Northwest | | 2.3 | 2.3 |
| R | X P | Port | | | 2.1 | 2.1 |
| S | X B T B | Port | 315 | T = starting pin | 3.7 | 4.2 |
| T | X B X B | Port | | | 4.6 | 4.5 |
| U | WA | Port | North | | 2.1 | 2.3 |
| V | W V A | Starboard | 0 | | 2.5 | 2.7 |
| W | V | Port | | | 1.3 | 1.9 |
| X | V L | Starboard | East | | 2.8 | 2.8 |
| Y | V P L | Starboard | 90 | | 3.1 | 3.1 |
| Z | V L V L | Starboard | | | 5.6 | 5.6 |

Hen and Chickens Can C-1A shall be passed on the **North side**. Red Rock Buoy and Newfoundland Reef Buoy shall be passed on the **South side**. The channel between Cormorant Reef and Great Captain Island shall not be used. Marks except T are as defined in the YRA SI.

TIME LIMIT: 2100 hours for all divisions.

SCORING: A high point scoring system shall be used. YRA of LIS PHRF non-spinnaker ratings will be used. Corrected times are calculated by time on time allowances for the joint IHYC/OGYC series and by the average of time on time and time on distance for the OGYC scoring. A boat will qualify for the joint series by racing 50% of the races sailed rounded down. Up to two races above the number required to qualify will be thrown out for scoring purposes.

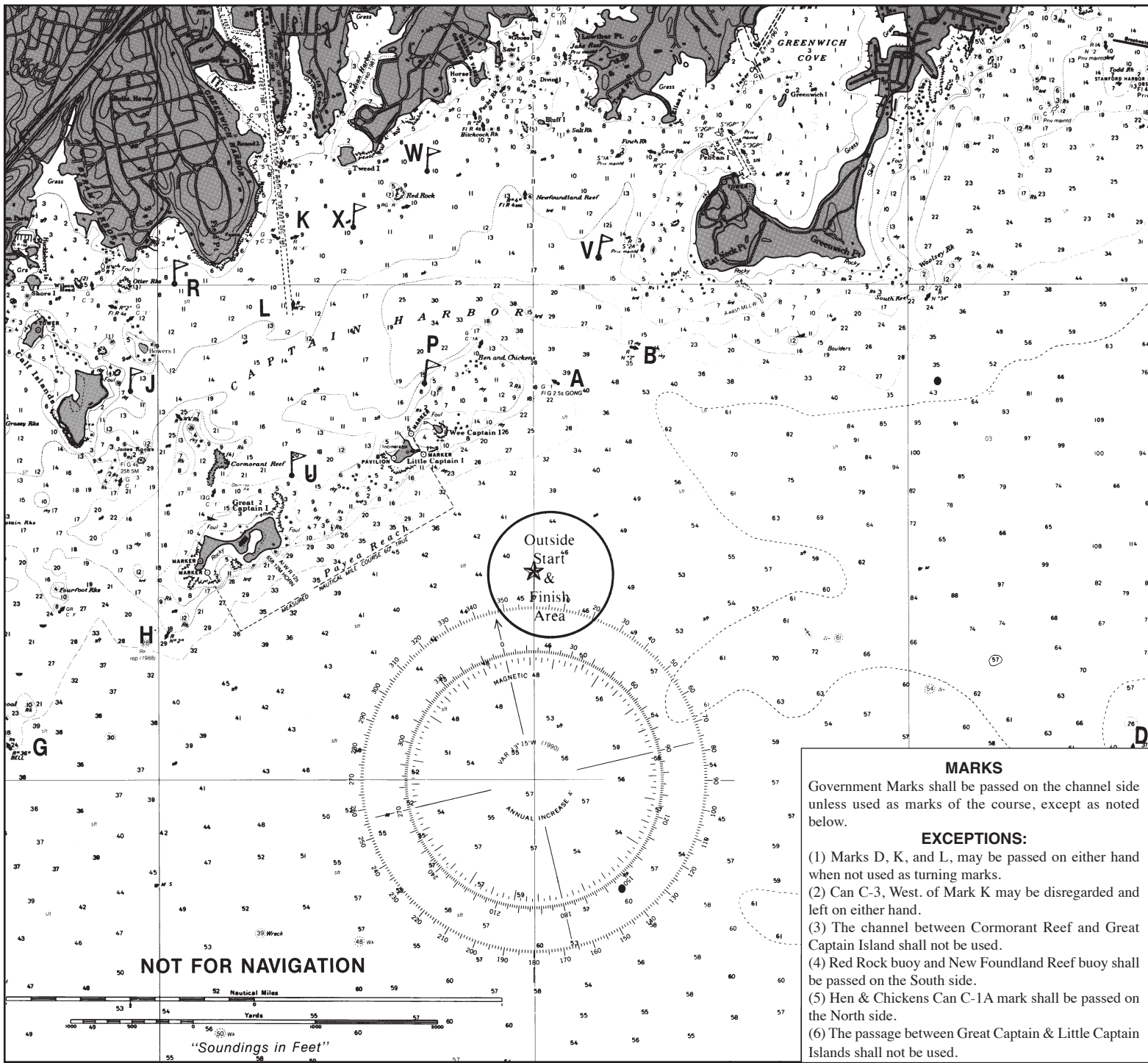
PROTESTS: The exoneration penalty available under RRS 44 for a boat that may have broken a rule of Part 2 shall be a One-Turn Penalty consisting of a tack and a jibe taken at the time of the incident. Boats shall report any protest, and also any penalty turns taken, to the Race Committee when they finish. Protests shall be written on forms available at each club, and in the hands of either sponsoring club's Race Committee (or its designee), no later than 2 hours after completion of the race. All protests will initially be arbitrated; the arbitrator will contact the parties. The Protest Arbitration Penalty shall be the 20% Scoring Penalty as described in RRS 44.3(c). The hearing for a protest not resolved by arbitration will take place approximately one hour after the Race Committee boat docks on the next Wednesday of regular racing, unless the hearing is re-scheduled for the mutual convenience of the participants.

SAFETY: It is the responsibility of skippers and crew to wear US Coast Guard approved life jackets whenever conditions warrant. Furthermore, as a condition of participation in any race, the owner and crew agree that the safety of the boat and her crew and the decision whether or not to start or continue a race is solely their responsibility.

PRIZES: Prizes 1st through 3rd will be awarded in each division for the combined fleet season. The Swan Trophy will be award to the best performing Swan assuming 3 or more boats qualify for the season.

For Indian Harbor boats, the Doremus Trophy will be awarded to the boat that in the opinion of the flag officers has demonstrated the most outstanding performance.

Old Greenwich Yacht Club will award 1st through 4th for each series as well as the entire season. The Commodore Kannenberg Trophy will also be awarded to the best overall finisher for OGYC.



MARKS
 Government Marks shall be passed on the channel side unless used as marks of the course, except as noted below.

EXCEPTIONS:

- (1) Marks D, K, and L, may be passed on either hand when not used as turning marks.
- (2) Can C-3, West of Mark K may be disregarded and left on either hand.
- (3) The channel between Cormorant Reef and Great Captain Island shall not be used.
- (4) Red Rock buoy and New Foundland Reef buoy shall be passed on the South side.
- (5) Hen & Chickens Can C-1A mark shall be passed on the North side.
- (6) The passage between Great Captain & Little Captain Islands shall not be used.

- | | | | |
|---|--|--|---|
| <p>A Bell "1" (flasher) Little Capt. Is. E. Reef.</p> <p>B Red Nun "2," Flat Neck Point.</p> <p>C Special mark, approximately 1 1/2 mi. to windward of start. Committee boat will indicate magnetic bearing.</p> <p>D Red Gong "32-A" (flasher) mid-channel buoy.</p> <p>G Red Bell "36," Bluefish Shoal.</p> <p>H Red Nun "2," Great Captain Island west reef.</p> | <p>J Special Indian Harbor mark off Calf Island.</p> <p>K Red Nun "4," Greenwich Hbr.</p> <p>L Red Nun "2," Greenwich Hbr.</p> <p>M Special reaching mark, positioned on a line which is an extension of the starting line.</p> <p>N Special mark, approximately 1/2 mi. to leeward of the start.</p> <p>P Special Riverside mark North of Wee Captain Is.</p> | <p>Q Special mark approx. 1/4 mi. to leeward of the start.</p> <p>R Special Belle Haven mark off Belle Haven Y.C.</p> <p>S Special mark, approximately 3/4 mi. to windward of start. Committee boat will indicate magnetic bearing.</p> <p>T Special mark on the opposite side of the Committee Boat from the Starting Line; may be used as a rounding mark and/or the finishing mark.</p> <p>U Special Indian Harbor mark NNE of Great Captain Island Light.</p> | <p>V Special Riverside mark west of Sugar Boat.</p> <p>W Special Riverside mark 1/4 mi. ENE of Red Rock.</p> <p>X Special Indian Harbor mark SW of Tweed Is.</p> <p>Y Special mark approx. 1/2 mi. to windward of start. Committee boat will indicate magnetic bearing.</p> <p>Z Special mark approx. 1 mi. to windward of start. Committee boat will indicate magnetic bearing.</p> |
|---|--|--|---|